

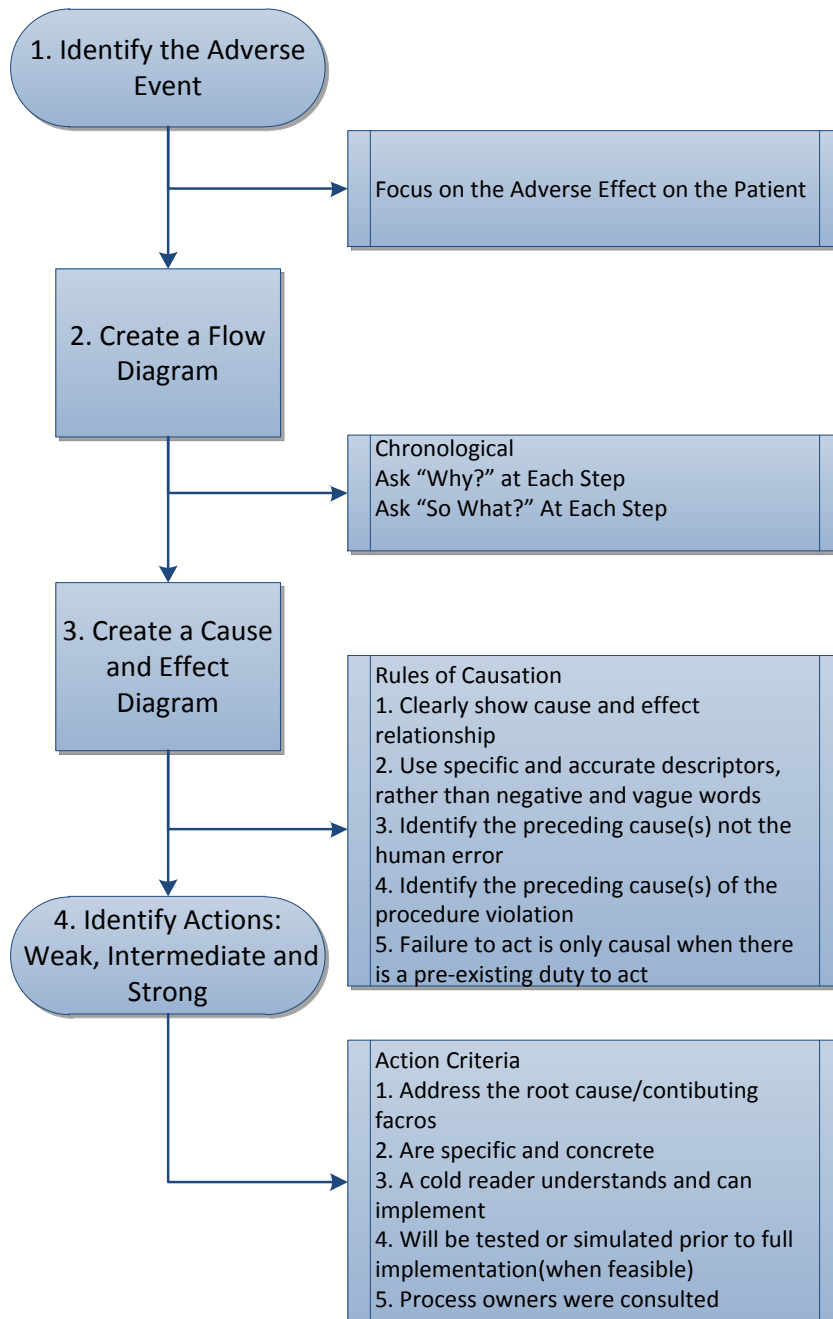
Patient Safety Toolbox

Emily Lorch, Alexander Reiss, Scott Kushin, Henry Park, University of South Florida, Tampa, FL

Brent Petty, Johns Hopkins, Baltimore, MD

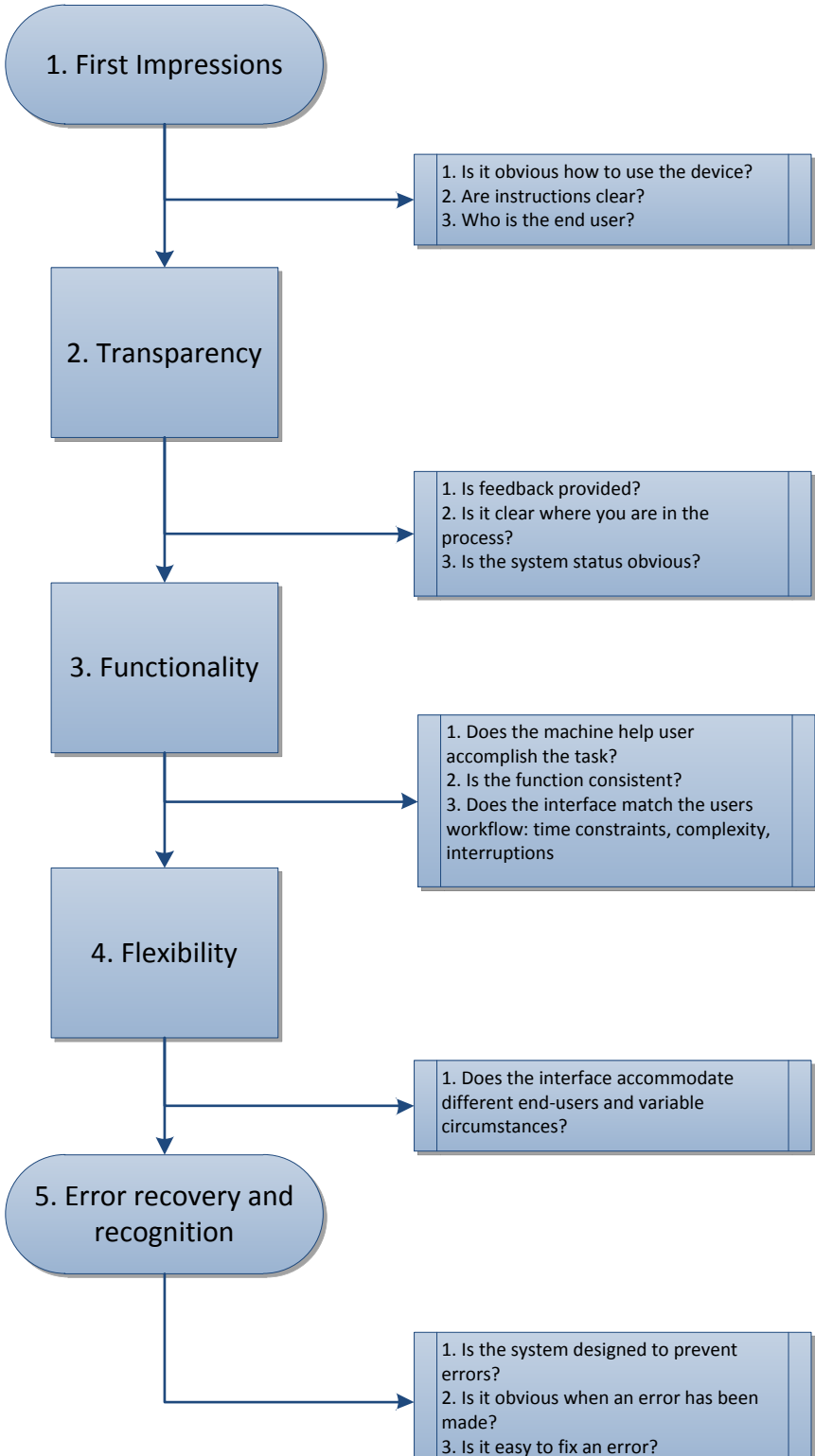
Eric Rosenberg, University of Florida, Gainesville, FL

Root Cause Analysis



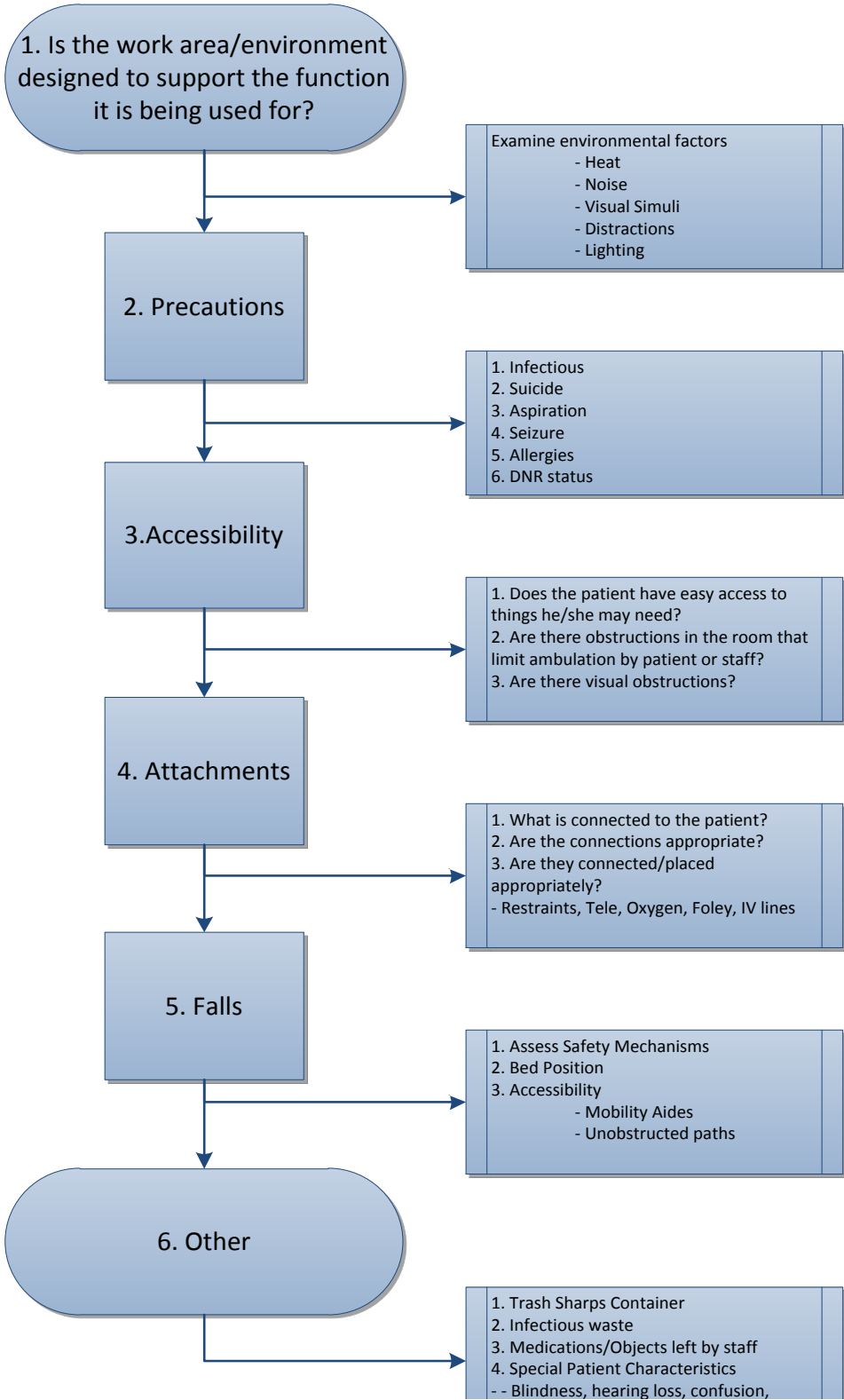
Patient Safety Toolbox

Human Factors Engineering



Patient Safety Toolbox

Environment of Care Rounds



Patient Safety Toolbox

(Reason 1990; Reason 1997; Casey 1998; Chassin and Becher 2002; Frankel, Joint Commission Resources Inc. et al. 2009; Wachter 2012)

Casey, S. M. (1998). Set phasers on stun : and other true tales of design, technology, and human error. Santa Barbara, Aegean.

Chassin, M. R. and E. C. Becher (2002). "The wrong patient." Ann Intern Med**136**(11): 826-833.

Frankel, A., Joint Commission Resources Inc., et al. (2009). The essential guide for patient safety officers. Oakbrook Terrace, IL, Joint Commission Resources and Institute for Healthcare Improvement.

Reason, J. T. (1990). Human error. Cambridge England ; New York, Cambridge University Press.

Reason, J. T. (1997). Managing the risks of organizational accidents. Aldershot, Hants, England ; Brookfield, Vt., USA, Ashgate.

Wachter, R. M. (2012). Understanding patient safety. New York, McGraw Hill Medical.

www.patientsafety.gov